

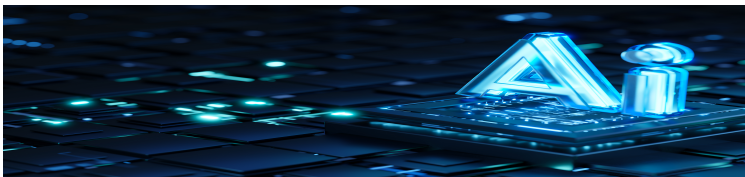
Accelerating CLM Implementation

Challenge

A natural gas company with operations across multiple states was trying to manage a vast and aging portfolio of commercial contracts. Agreements dated back decades; spanned customer, distributor, and franchise contracts; and were stored in disparate locations and formats.

As the client prepared to implement a contract lifecycle management (CLM) system, one critical question emerged: how to efficiently locate and extract key data from more than 1,000 legacy contracts and load it into the new system. Historically, this work relied on paralegals and contract managers manually reading each contract and keying in data.

The client wanted a solution that would be fast, accurate, and cost-effective, and that would give its in-house team a single, searchable view of its active contracts and key terms.



AI Approach

Our attorney team — including corporate partner Chad Warpula and attorney Reuben Dacher?Shapiro and the Troutman eMerge team, led by Mike Frankel — partnered to design an AI-powered workflow tailored to the client's CLM needs.

Our corporate attorneys first defined the business and risk requirements, including what provisions and attributes mattered most for this client's contracts, such as parties, location, term, renewal options, assignment, and other critical terms.

Working from that framework, eMerge configured an AI-driven extraction process that would produce outputs in the format required by the client's CLM platform.

We leveraged Hebbia to complete this task, creating AI prompts tied to specific CLM fields. For each contract, we used AI to:

- Pull the exact contract language for a given provision.
- Generate a plain-language summary of that provision.
- Apply standardized coding to support attorney-driven judgments and business decisions.

Reviewers could click directly from each data point to the underlying contract text via hyperlinks, enabling rapid validation and quality control. We first tested this approach on a representative sample of contracts to refine prompts and outputs, then scaled the process across the full set of more than 1,000 agreements with a larger Troutman eMerge review team, under attorney supervision.

Impact

By combining attorney judgment with AI, we transformed what would have been a lengthy, manual effort into a streamlined process.

Key impacts included:

- **Significant time and cost savings:** We reduced the time required to extract and structure data from the legacy contracts to roughly half of what a traditional manual review would have taken.
- **Higher-quality, CLM-ready data:** The AI workflow produced consistent, structured data aligned to the client's specific CLM fields, while preserving links to the underlying contract language for easy verification.

The Team

Christian Chad Warpula

Partner

704.998.4043 chad.warpula@troutman.com

Michael I. Frankel

Counsel

215.981.4465 michael.frankel@troutman.com

Reuben Dacher-Shapiro

Attorney

212.704.6360 reuben.dacher-shapiro@troutman.com

RELATED INDUSTRIES + PRACTICES

- [eDiscovery + Data Management](#)