

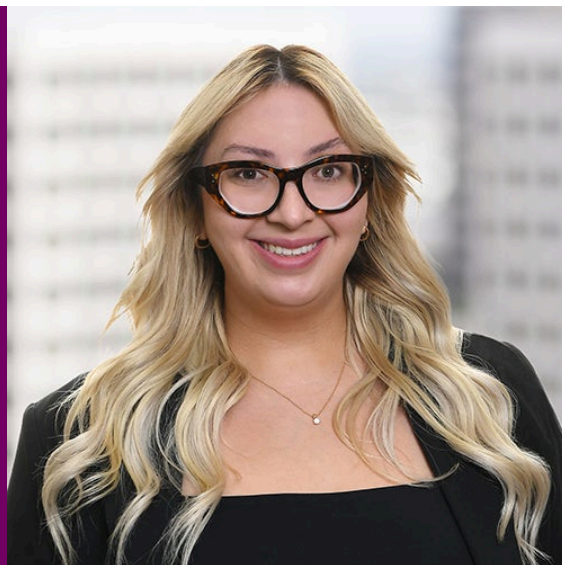
## Christina Anton

Associate

Los Angeles

[christina.anton@troutman.com](mailto:christina.anton@troutman.com)

D 213.687.6704



### OVERVIEW

Christina advises employers on all aspects of employment law matters, including compliance with the Fair Employment and Housing Act, the Family Medical Leave Act, and the California Family Rights Act. She is involved in defending clients throughout all stages of litigation, including dispositive motions, motions to compel arbitration, and settlements. Christina's work extends to overseeing discovery in employment law cases — preparing clients for depositions, managing document productions, and taking and defending depositions.

Christina provides comprehensive counseling to clients, developing and revising employee handbooks and workplace policies on discrimination, harassment, and retaliation. She conducts detailed exposure analyses for wage and hour allegations, including meal and rest period violations, helping clients to understand their risks and options.

### TOP AREAS OF FOCUS

- Labor + Employment

### EDUCATION AND CERTIFICATIONS

#### EDUCATION

- University of the Pacific, McGeorge School of Law, J.D., *Dean's honor list*, 2019-2021, 2021, Academic Achievement Scholarship; Student Bar Association; research assistant; primary production editor, *University of the Pacific Law Review*, 2020-2021
- California State University, Sacramento, B.S., *cum laude*, *Dean's List*, 2016, Honors at Admission 2014
- Antelope Valley College, A.A., *magna cum laude*, *Dean's honor list*, 2014, administration of justice

#### BAR ADMISSIONS

- California

#### COURT ADMISSIONS

- U.S. District Court, Northern District of California
- U.S. District Court, Southern District of California
- U.S. District Court, Central District of California